



Eagle Newsletter

August 29, 2022

Encourage, Empower, Excel

IMPORTANT

dates to remember



- Labor Day (No School) – September 5th
- PTO Meeting – September 7th @ 5:30 p.m.
- SBDM Meeting – September 8th @ 2:45 p.m.
- Fall Book Fair – September 19th-23rd
- Personalized Learning Day – September 23rd



- Professional Development (No School) – October 7th
- Fall Break – October 10th-14th
- Red Ribbon Week – October 24th – 28th



SCHOOL MENUS FOR AUGUST 29th-September 2nd

ALL MEALS ARE FREE TO STUDENTS!

Week 1	Monday	Tuesday	Wednesday	Thursday	Friday
	Pasta w/ Beef Sauce Breadstick Broccoli (3/4 cup) Pears Milk	Cheeseburger on WG Bun French Fries (3/4 cup) Peaches Milk	Chicken Strips (3) WG roll Mashed Potatoes (1/2 cup) Green Beans (1/2 cup) Fresh Fruit Milk	Hot Dog on WG bun Baked Beans (1/2cup) Dragon Punch (1/2cup) Fresh Fruit Milk	Breaded Cheese Sticks (6) Baby Carrots (3/4 cup) Fruit Cup Marinara Cup (opt) Milk

Week 1	Monday	Tuesday	Wednesday	Thursday	Updated 7/15/2022 Friday
	Muffin & crackers Juice Peach Cup Milk	Sausage Biscuit Juice Applesauce Cup Milk	Breakfast Pizza Juice Apple Slices Milk	Cereal & crackers Juice Raisins Milk	Donuts Juice Orange Wedges Milk

***Update on IMPORTANT COVID 19 GUIDELINES REMINDERS FOR 2022-2023!

Great news! We have some clarification on parents coming in to eat lunch with their children during their lunch time. Because we have the Eagle's Nest in the front of the building that is separate from the lunchroom, we have lunch visitors! All the other rules for eating in the Eagle's Nest that are in the handbook apply. Due to confidentiality issues, parents/guests may eat with their child only. Friends will not join your child in the Eagle's Nest.

We can have volunteers in the building! All volunteers must go through the application process every year. This process involves a background check for new volunteers or volunteers whose background checks have expired and a volunteer training. If you are interested in volunteering this school year, please contact Melanie Madison at melanie.madison@shelby.kyschools.us



**HERITAGE WISHES
EVERYONE A HAPPY
LABOR DAY!**



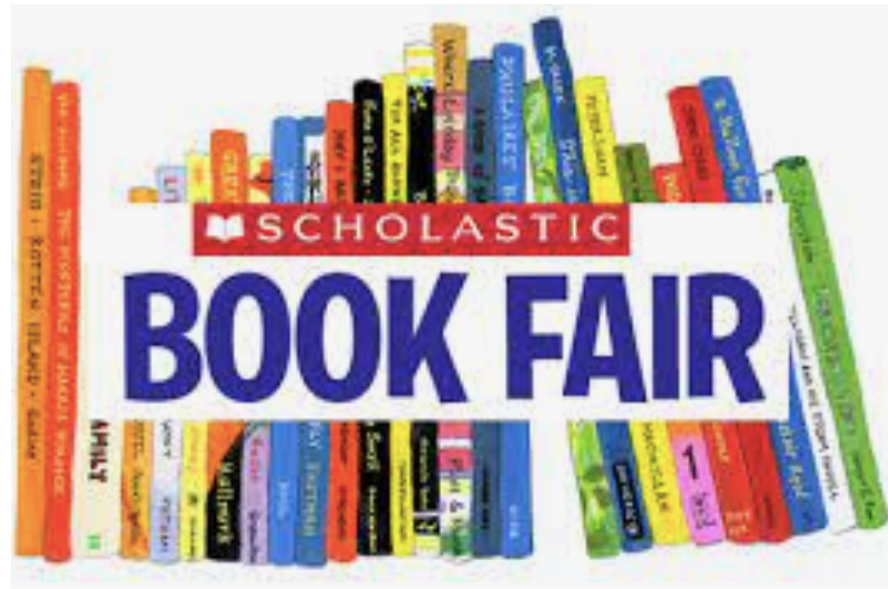
No School on Monday, September 5th!

A graphic of a blue rectangular sign with yellow text, hanging from two black cords against a yellow background. The sign has four black circular fasteners at its corners. Below the sign is a white rectangular box with blue text, also featuring four black circular fasteners at its corners.

PTO MEETING

**SEPTEMBER 7TH
5:30PM**

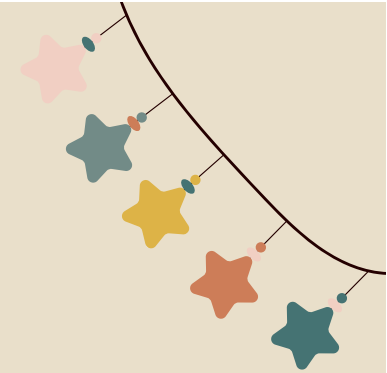
**HERITAGE ELEMENTARY
LIBRARY**



September 19th – 23rd!



**JOIN
THE
HERITAGE
BABY EAGLES'
CLUB**



**YOU CAN SIGN UP FOR A MONTHLY FREE
BOOK AND RESOURCES WHEN YOU SEND IN
A PICTURE OF YOUR LITTLE ONE WHO IS 4
YEARS OLD AND UNDER. YOU CAN EMAIL
THE PICTURE WITH THE CHILD'S NAME AND
AGE TO
MELANIE.MADISON@SHELBY.KYSCHOOLS.US**



School Payments Simplified

MY
SCHOOL
BUCKS

Easily pay for school items and fees with MySchoolBucks



Fast & Easy
Checkout



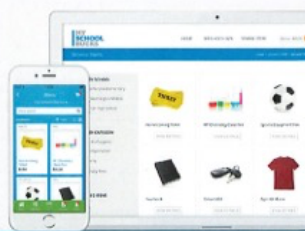
Simple
& Secure



Make Payments
Anytime

Get Started:

- 1 Go to myschoolbucks.com or download the app
- 2 Visit the school store & add items to your cart
- 3 Check out with your credit/debit card



MySchoolBucks.com

DOWNLOAD



GET SOCIAL



Compras Escolares Hechas Fáciles

MY
SCHOOL
BUCKS

Fácilmente pague las tarifas y los artículos escolares con MySchoolBucks.



Pagos rápidos
y fáciles



Sencillo
y Seguro



Pague en
cualquier momento

Para Comenzar:

- 1 Vaya a myschoolbucks.com o descargue la aplicación
- 2 Visite la tienda escolar y agregue los artículos al carro
- 3 Pague con su tarjeta de crédito o débito



MySchoolBucks.com

DESCARGUE



SOCIALIZA





Johnna M. Black,
Principal

Megan Baxter
School Counselor

Encourage, Empower, Excel

Heritage Elementary
8300 Frankfort Road
Waddy, KY 40076
Ph: (502) 829-5242
Fax: (502) 829-9605

Molly Smith,
Assistant Principal

Kara Clark,
Instructional Coach

Dear Heritage Families:

We are announcing the fee structure for the 2022-23 school year for all our elementary grades.

- **No device usage fee** will be charged, however, damaged or lost items will still require a payment.
- **A simpler, less expensive supply list** has been developed for use by all elementary grades, district-wide.
- All elementary schools will charge the same **\$20 instructional fee** and no other fees will be charged for instructional supplies; this \$20 will cover items such as headphones, erasers, Primary journals, additional or specialized folders and notebooks, rulers, index cards, highlighters, agenda books, field day t-shirts, recorders, etc.
- Any elementary student participating in at least one school club will be charged **only one \$20 club fee** instead of multiple individual club fees.
- **No other fees** will be charged during the 2022-23 school year for elementary grades except for occasional field trips; the maximum fee an elementary parent will pay is \$40 (plus field trips)
- **No other requests** will be made for elementary parents to send in classroom supplies for the 2022-23 school year

A waiver or adjustment may be made for any student qualifying for free or reduced meals to ensure that no student is denied services due to the inability to pay. In order for your student to receive the fee waiver, you are required to complete the Educational Benefit Form (EBF).

If you would like to donate additional funds or supplies, you can do so by contacting the school office or the Family Resource Center.

Thank you for allowing us to serve your children!

School Calendar

Shelby County Public School 2022-2023

July 2022						
Su	Mo	Tu	We	Th	Fr	Sa
					1	2
3	4	5	6	7	8	9
10	11	12	13	14	15	16
17	18	19	20	21	22	23
24	25	26	27	28	29	30
31						

August 2022						
Su	Mo	Tu	We	Th	Fr	Sa
	1	2	3	ELE SEC		6
7	SB	9	10	11	12	13
14	15	16	17	18	19	20
21	22	23	24	25	26	27
28	29	30	31			

September 2022						
Su	Mo	Tu	We	Th	Fr	Sa
					1	2
3	4	5	6	7	8	9
10	11	12	13	14	15	16
17	18	19	20	21	22	PL
23	24	25	26	27	28	29
30						

October 2022						
Su	Mo	Tu	We	Th	Fr	Sa
						1
2	3	4	5	6	SB	8
9	10	11	12	13	14	15
16	17	18	19	20	21	22
23	24	25	26	27	28	29
30	31					

November 2022						
Su	Mo	Tu	We	Th	Fr	Sa
		1	2	3	4	5
6	DPLC	8	9	10	11	12
13	14	15	16	17	18	19
20	21	22	23	24	25	26
27	28	29	30			

December 2022						
Su	Mo	Tu	We	Th	Fr	Sa
					1	2
3	4	5	6	7	8	PL
9	10	11	12	13	14	15
16	17	18	19	20	21	22
23	24	25	26	27	28	29
30	31					

January 2023						
Su	Mo	Tu	We	Th	Fr	Sa
1	2	3	4	5	6	7
8	9	10	11	12	13	14
15	16	17	18	19	20	21
22	23	24	25	26	27	28
29	30	31				

February 2023						
Su	Mo	Tu	We	Th	Fr	Sa
			1	2	PL	4
5	6	7	8	9	10	11
12	13	14	15	16	DPLC	18
19	20	21	22	23	24	25
26	27	28				

March 2023						
Su	Mo	Tu	We	Th	Fr	Sa
			1	2	3	4
5	6	7	8	9	10	11
12	13	14	15	16	PL	18
19	20	21	22	23	24	25
26	27					

April 2023						
Su	Mo	Tu	We	Th	Fr	Sa
						1
2	3	4	5	6	7	8
9	10	11	12	13	14	15
16	17	18	19	20	21	22
23	24	25	26	27	PL	29
30						

May 2023						
Su	Mo	Tu	We	Th	Fr	Sa
	1	2	3	4	5	6
7	8	9	10	11	12	13
14	15	16	17	18	19	20
21	22	23	24	25	26	27
28	29	30	31			

June 2023						
Su	Mo	Tu	We	Th	Fr	Sa
					1	2
3	4	5	6	7	8	9
10	11	12	13	14	15	16
17	18	19	20	21	22	23
24	25	26	27	28	29	30

Professional Development (No School for Students)	Election Day (No School)	Break (No School)	Personalized Learning Day
First and Last Day of School	Opening and Closing Day For Staff	Holiday (No School)	

**Ms. Katie
Morrison**
Music Teacher

Email:
katherine.morrison@shelby.
kyschools.us

MEET THE TEACHER!

Personal Information:

Hi! My name is Katie Morrison and this will be my first year at Heritage Elementary! This will be my 7th year teaching overall! I live in Louisville with my fiancé, my cat Stella, and my hedgehog Confetti! I love Disney, travelling, reading, video games, and spending time with friends and family!

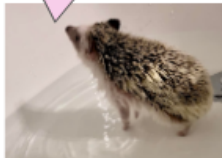


Education:

Bachelors of Music in Vocal Music
Education - 2016

Western Kentucky
University

I'm
Confetti!



I'm
Stella!!



Hobbies/ Interest:

- Traveling
- Reading
- Netflix
- Disney and Star Wars
- Music

Staff Birthdays:

Ms. Travis 9/8

Mr. Burns 9/8

Pursuant to KRS 158.186, before Sept. 15 of each year the commissioner of education must distribute copies of [KRS 158.183](#), which details the “rights of students,” and [KRS 158.195](#), which requires each public elementary and secondary school to “display the national motto” of the United States.

[**Click here to read the Student Handbook for this year!**](#)

[**Click here to read last Friday’s district newsletter.**](#)

COMMUNITY EVENTS



Resources, & Information

FREE **HEALTH and RESOURCE** **FAIR**

Hosted by:
**Centenary United
Methodist Church**
429 Main Street
Shelbyville, KY 40056



**Saturday,
September 10
10am - 2pm**

Glucose screening
Blood Pressure screening
Dental screening
Vision screening
Vaccines

Plus information about multiple local services and resources ,
including:
Medical, dental, eyeglasses, Medicaid applications, pregnancy care,
school resources, jobs, migrant program, give aways, and more!

ID NOT Required.

Provided with our event partners:



Humana
Healthy Horizons...
in Kentucky



GRATIS **Feria de Salud y Recursos**

Iglesia Centenary
429 Main Street
Shelbyville, KY 40056



**Sábado
10 de Septiembre
10am - 2pm**

Chequeos de:
Glucosa
Presión de la sangre
Dental
Vision
Vacunas

Información acerca de servicios y recursos locales,
incluyendo:
Servicios médicos , dentales, espejuelos, aplicaciones para Medicaid,
servicio de embarazos, recursos escolares, programa migratorio, y más!

Identificación no requerida.

Proveido con la ayuda de nuestros socios:



Humana
Healthy Horizons...
in Kentucky





Kentucky Citizen Foster Care Review Boards

Working for Kentucky's Future - Our Children

**Public invited to give input on foster care system
at virtual town hall meetings in September**

Let your VOICE be heard!

The public is invited to attend virtual town hall meetings in September to discuss ways to improve outcomes for Kentucky children and families involved in the foster care system. The meetings will take place September 19th, 21st, 27th, and 30th. Local Citizen Foster Care Review Boards are hosting these regional Town Hall meetings. Come prepared to voice your concerns regarding the foster care system and how communities can better support families.

Relative and fictive kin placements are instrumental in reducing the trauma of out-of-home placement as well as reinforcing children's cultural identities. Recent Kentucky legislation has expanded the definition of fictive kin to include persons with strong ties to an infant's parents and siblings. These September Town Hall meetings will focus on the important role relative and fictive kin caregivers play for children in foster care. What supports are available for relative and fictive kin caregivers in your area? Are there gaps in kinship supports? What solutions could be identified to remedy barriers and gaps in service delivery for relative and fictive kin caregivers? We would like

to hear from you and learn your responses to these questions. The meeting will allot time for open discussion. Community input is vital to identifying needs in your local area. Due to confidentiality, specific cases will not be discussed.

Findings from the meetings will be reported to the Kentucky Citizen Foster Care Review Board and will be included in the CFCRB's annual recommendations to the Supreme Court, governor and legislature. Regional meetings are among the reforms called for in House Bill 1, the adoption and foster care legislation passed in 2018 to improve outcomes for children in out-of-home care.

See the latest CFCRB annual report at this link: [2021 CFCRB Annual Report](#).

For more information, contact the CFCRB at cferb@kycourts.net.

Registration

Participants can attend the Town Hall for their location via ZOOM. **Registration is required.** Participants will receive a confirmation email with the Zoom meeting link one-week prior to the Town Hall.

Town Hall Schedule

September 19, 2022

11:00 a.m.-12:00 p.m. CT/12:00 p.m.-1:00 p.m. ET

Registration required. Click [here](#) to register. You will receive a confirmation email with the Zoom meeting information. For citizens residing in Bullitt, Fayette, and Jefferson

September 21, 2022

11:00 a.m.-12:00 p.m. CT/12:00 p.m.-1:00 p.m. ET

Registration required. Click [here](#) to register. You will receive a confirmation email with the Zoom meeting information. For citizens residing in these counties: Anderson, Boone, Bourbon, Boyle, Bracken, Campbell, Carroll, Clark, Estill, Fleming, Franklin, Gallatin, Garrard, Grant, Harrison, Henry, Jessamine, Kenton, Lee, Lincoln, Madison, Mason, Mercer, Nicholas, Oldham, Owen, Owsley, Pendleton, Robertson, Scott, Shelby, Spencer, Trimble, and Woodford

September 27, 2022

11:00 a.m.-12:00 p.m. CT/12:00 p.m.-1:00 p.m. ET

Registration required. Click [here](#) to register. You will receive a confirmation email with the Zoom meeting information.

For citizens residing: Allen, Ballard, Barren, Breckinridge, Butler, Caldwell, Calloway, Carlisle, Christian, Crittenden, Daviess, Edmonson, Fulton, Graves, Grayson, Hancock, Hardin, Hart, Henderson, Hickman, Hopkins, LaRue, Livingston, Logan, Lyon, Marshall, McCracken, McLean, Meade, Metcalfe, Muhlenberg, Nelson, Ohio, Simpson, Todd, Trigg, Union, Warren, and Webster

September 30, 2022

11:00 a.m.-12:00 p.m. CT/12:00 p.m.-1:00 p.m. ET

Registration required. Click [here](#) to register. You will receive a confirmation email with the Zoom meeting information.

For citizens in: Adair, Bath, Bell, Boyd, Breathitt, Carter, Casey, Clay, Clinton, Cumberland, Elliott, Floyd, Green, Greenup, Harlan, Jackson, Johnson, Knott, Knox, Laurel, Lawrence, Leslie, Letcher, Lewis, Magoffin, Marion, Martin, McCreary, Menifee, Monroe, Montgomery, Morgan, Perry, Pike, Powell, Pulaski, Rockcastle, Rowan, Russell, Taylor, Washington, Wayne, Whitley, and Wolfe



Hosparus Health Grief Counseling Center

Upcoming Youth and Family Programs

Guardians of Grief Treasure Hunt

Thursday, September 29, 1:00 – 3:00 p.m.

Find clues to learn and care for grief and solve the puzzle of a missing map that leads to a hidden cache of unexpected treasure. Children, ages 6-11. Space is limited. RSVP is required.

Camp Evergreen

Friday evening, October 14 – Sunday, October 16

This weekend retreat is for families with children ages 6-18 healing from loss due to death.

Registration deadline is Monday, September 19th. Access your application at:

<https://bit.ly/campevergreen2022> or find us online at Hosparus.org

Setting the Table for Gratitude

Saturday, November 12, 10:30 a.m. – 2:00 p.m.

Family-centered workshop for ages 5 and up and the adult(s) to whom they are connected. Learn about gratitude's relationship to grief and create "Gratitudes" and other things for your Thanksgiving table. Lunch provided. Registration required.

Unexpected Gifts: Ornaments and Other Connecting Objects

Saturday, December 10, 10:30 a.m. – 1:30 p.m.

Family-centered workshop for ages 5 and up and the adult(s) to whom they are connected. The season of gift giving invites us to consider what we have received from those close to us. Create ornaments and simple gifts to pay this forward. Lunch provided. Registration required.

First Cup of the Day: Parent Talk (Virtual)

Every 1st and 3rd Wednesday mornings, 9:30 – 10:30 a.m.

On its best days parenting is challenging. It is even more so when parenting a grieving child while adapting to loss, yourself. Here we talk about everything from behaviors to expect, how to address them, and handling questions that have no easy answers. Pour yourself a cup and join in this ongoing conversation. Registration is required. You will be sent a link to the conversation just prior to its scheduled times. Questions? Contact Erin at 502-456-5451.

Registration is easy. Look for program links on our website:

www.Hosparushealth.org or call the Grief Counseling Center at 502-456-5451.

G-FORCE

A support program for grieving youth

Gravity. It grounds us. It holds us in orbit. It helps us stay centered. It pulls against us when rocketing into the stratosphere. Grief works much the same way. G-Force refers to the pull of gravity when making a transition forward. It takes practice and conditioning to withstand the pressure and to adapt. So does grief. We are not helpless in the face of loss. We can become stronger, more resilient, and confident that we can do hard things.

G-FORCE is a peer-centered education, support, and networking opportunity for youth coping with loss due to death. Meetings occur throughout the year offering a cycle every fall and spring following the school calendar. Youth can join at any point and re-up in an upcoming cycle.

**G-FORCE meets at the Hosparus Health Grief Counseling Center
3526 Ephraim McDowell Drive, Louisville, 40205**

For youth in grades 6 through 10

Fall 2022: Every 1st and 3rd Thursday, 4:30 – 6 p.m.
September 1 through December 15

Spring 2023: Every 2nd and 4th Thursday, 4:30 – 6 p.m.
February 9 – April 27

For youth in grades 2 through 5

Fall 2022: Every 1st and 3rd Friday, 4:30 – 6 p.m.
September 2 through December 16

Spring 2023: Every 2nd and 4th Friday, 4:30 – 6 p.m.
February 10 – April 28

There is no cost for this program, but registration is required.
Registration can be completed online at www.hosparushealth.org
Or by calling the Grief Counseling Center at 502-456-5451

Grief is a force of nature. So are you.

HOSPARUS HEALTH[®]



Evergreen

A CAMP FOR FAMILIES COPING WITH DEATH



Evergreen is made possible through the generous support of the WHAS Crusade for Children and Kosair Charities, as well as other corporations, groups and individuals. Registration fees cover only a portion of the expense of this program.

Join us for a special weekend where traditional camp meets important grief work for bereaved families with children (ages 6 - 18).

Evergreen is facilitated by licensed professional counselors from the Hosparus Health Grief Counseling Center and trained volunteers. This unique retreat provides an opportunity for families to gather, enhance their resilience and rediscover hope.

*All meals and snacks are provided.
Each family enjoys a private room.*

October 14-16, 2022
(Friday Evening-Sunday Afternoon)

Registration fees are as follows:

Family of 2 - \$100
Family of 3 - \$125
Family of 4 - \$150
(additional family members \$25 each)

Scholarship assistance is available for families based on need.

**Application deadline is Monday,
September 19, 2022.**

Register online:
<https://bit.ly/campevergreen2022>
Applications are available by phone,
502-456-5451.

Space is limited so be sure to register early.

Camp Evergreen is held at:
Country Lake Christian Retreat
815 Country Lake Rd,
Underwood IN 47177
(30-minute drive north of Louisville)

ACTIVITIES

- Family time and recreation
- Team building and cooperative games
- Specialized grief workshops
- Traditional campfire
- Art activities and games
- Memorial celebration

Hosparus Health Grief Counseling Centers provide grief support through counseling, educational classes, and groups for children and adults.

Make a change ...



... to make more than change!

Did you know that GED® graduates earn an average of \$9,400 more per year than non-graduates?

Those who go on to earn an associate degree earn an average of \$6,900 more per year than that – and it only goes up from there!

We can help you learn more to earn more!

We offer FREE academic skill-building classes that can help you:

- Earn GED® diploma • Prepare for college
- Increase career opportunities • Increase employability skills
- Assist kids with homework • And much more!

JCTC Shelby County Adult Education

1361 Frankfort Road, Shelbyville, KY 40065

502-213-3669

http://jefferson.kctcs.edu/Academics/Adult_Education

**KENTUCKY
Adult Education**

Your future starts here!

1-800-928-7323 • www.facebook.com/KYAdultEducation

Would you like to learn English?

Shelby County Adult Education offers FREE ESL Classes

Learn:

- To speak English
- To read and write
- Daily life skills
- Basic communication skills
- Advanced English



JCTC Shelby County Adult Education

St. James Episcopal Church

222 Main Street

Shelbyville, KY 40065

Registration is week of August 7

Mon. & Wed. 9:00 a.m. – 11:00 a.m. Tues. & Thurs. 6:00 p.m. – 8:00 p.m.

Register Now!

Times of class are the same as above.

Shelby County Daycares List

Call for openings.

Childcare Facilities /Cuidado de Niños

- **Adventure Club- infants and toddlers through 5th grade**
<https://simpsonvillebaptist.com/connect/weekday-preschool-2/>
Phone (502) 722-5249 or Email: ac@simpsonvillebaptist.com
- **Inspirations Child Care**
7387 Shelbyville Rd, Simpsonville, KY 40067 Phone: (502) 205-0026
- **Corpus Christi Classical Academy Montessori Program**
7010 Us Highway 60, Simpsonville KY 40067
Simpsonville, KY 40067 | (502) 722-8090
- **Kidsplay Child Care**
54 Old 7 Mile Pike, Shelbyville, KY 40065 (502) 633-9663

- **Shelbyville Community Day Care**
520 Mount Eden Rd, Shelbyville, KY 40065 (502) 633-6757
- **Little Hands Development Center**
250 haven Hill Rd,, Shelbyville, KY 40065 (502) 437-0547
- **Child Town Inc**
1940 Midland Trl, Shelbyville, KY 40065 (502) 633-2050
- **Little Stars Preschool**
100 Loop Rd, Fisherville, KY 40023 (502) 477-1150
- **Dorman Preschool Center**
719 Burks Branch Road, Shelbyville, KY - 40065 (502) 633-2760

Online Search Tool

<https://www.4cforkids.org/for-families/find-child-care/>

Child Care Referrals Tailored to Your Needs

Selecting child care that meets your needs isn't always easy. Let us help you identify providers in your area that offer the kind of care you need. We offer a variety of ways to search for state-regulated child care in Louisville and the surrounding area. We can search for child care based on the ages of your children, your work and home schedules, your commute route, whether you need transportation for your child, and other factors that make your needs unique. We do not license, endorse, or recommend any particular provider. Only you can determine the best quality care setting for your child.

- **ONLINE SEARCH** – This tool allows you to create your own customized search for state-regulated child care in Kentucky. This search includes information about ages served, operating hours and STAR ratings. You will be prompted to create log in information.
- **CALL** – To speak to a referral counselor, call 502-636-1358.

Herramienta de búsqueda en línea

Referencias de cuidado infantil adaptadas a sus necesidades

<https://www.4cforkids.org/for-families/find-child-care/> No siempre es fácil seleccionar un cuidado infantil que satisfaga sus necesidades. Permítanos ayudarlo a identificar proveedores en su área que ofrezcan el tipo de atención que necesita. Ofrecemos una variedad de formas de buscar cuidado infantil regulado por el estado en Louisville y sus alrededores. Podemos buscar cuidado infantil en función de las edades de sus hijos, sus horarios de trabajo y hogar, su ruta de viaje, si necesita transporte para su hijo y otros factores que hacen que sus necesidades sean únicas. No autorizamos, respaldamos ni recomendamos a ningún proveedor en particular. Solo usted puede determinar el entorno de atención de mejor calidad para su hijo.

- **BÚSQUEDA EN LÍNEA:** esta herramienta le permite crear su propia búsqueda personalizada de cuidado infantil regulado por el estado en Kentucky. Esta búsqueda incluye información sobre edades atendidas, horas de funcionamiento y calificaciones de STAR. Se le pedirá que cree información de inicio de sesión.

LLAME - Para hablar con un consejero de referencias, llame al 502-636-1358.



The Serenity Center has a food bank on Wednesdays
from 12 p.m. to 4 p.m.

Serenity Center
98 7th Street
Shelbyville, KY 40065

The Bagdad Baptist Food Pantry is open the 2nd and 4th Saturday
of every month from 9:15 a.m. – 12:00 p.m. Food is available to
any Shelby County residents. Must show a valid driver's license.
Entry is in the back of the church. There is also a small pantry
outside the church open at all times.



Heritage Elementary Family Resource Center

Melanie Madison, Coordinator

Phone number: (502) 829-5242

Hours of Operation: Monday-Friday 7:00 a.m. - 3:00 p.m., available evenings and weekends by appointment.





Check out the Virtual FRC Office!

<https://docs.google.com/presentation/d/106NkKh0pa6b5qnn0m93ZDNJgXuYtIDDUEHAYDeRWokc/edit#slide=id.>